

## Welcome Visitors to Accredited Standards Committee X9, Inc.

### Accredited Standards Committee X9, Inc. headquarters (ASC X9, Inc.)

**Address:** 275 West Street, Suite 107  
Annapolis, Maryland 21401

**Telephone:** 410-267-7707

**Fax:** 410-267-0961

#### **Office Location:**

Accredited Standards Committee X9, Inc. is located at 275 West Street Suite 107 (effective February 6, 2012) – **West Garrett Place** is the building name. The building is across from the Park Place complex (and a Westin Hotel).

### **Directions:**

#### **Directions from Dulles Airport (IAD)**

- From Dulles, take the Dulles Access toll road towards Washington.
- Exit onto 495 West, which will become 95/495 North.
- Stay on 495 North and exit onto Route 50 East.... Picture you entered 495 at 9:00 and exit at 3:00
- Take Route 50 East to exit 24 Rowe Boulevard, South to Annapolis Historic District and stay in the right lane.
- The right lane will merge onto Rowe Boulevard.  
Proceed to the second light, Taylor Avenue and turn right. .
- Follow for .75 of a mile Enter roundabout and take 3rd exit onto MD-450 East
- 275 West St. is on the Right
- Travel time approximately 90 minutes.

#### **From Baltimore Washington Airport (BWI)**

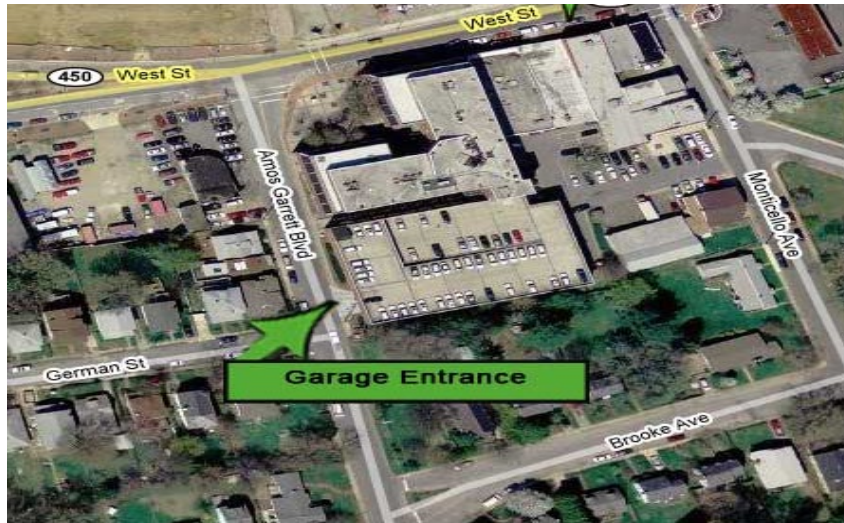
- Exit out of the airport to Elm Road
- Turn right onto Aviation Boulevard
- Follow I-97 South towards Annapolis/Bay Bridge
- Take 97 South for approximately 15 miles
- Merge onto Route 50 East
- Take exit 24 Rowe Boulevard, South to Annapolis Historic District and stay in the right lane
- The right lane will merge onto Rowe Boulevard
- Proceed to the second light, Taylor Avenue and turn right
- Follow for .75 miles, enter roundabout and take 3<sup>rd</sup> exit onto MD-450East. 275 West Street is on the Right
- Travel time is approximately 30 minutes

#### **Directions from Reagan International Airport (DCA)**

- Take the George Washington Parkway North towards Washington and pick up 395 North.
- At the end of 395 turn right onto New York Avenue.
- Follow New York Avenue to Route 50 East.
- Follow Route 50 East for approximately 25 miles.
- Take exit 24 Rowe Boulevard, South to Annapolis and stay in the right lane.
- The right lane will merge onto Rowe Boulevard.
- Proceed to the second light, Taylor Avenue and turn right. Follow for .75 of a mile.
- Enter next roundabout and take 3rd exit onto MD-450 East. 275 West St. is on the Right
- Travel time approximately 50 minutes.

## Parking at 275 West Street

Parking at 275 West Street is \$7.00 per day by credit card only no cash accepted. Or park underground \$5.00 all day at the Park Place Parking Garage across the street. To enter the 275 West Street parking garage from West Street heading toward the city of Annapolis, turn right onto Amos Garrett Blvd. In approximately 300 ft., the garage entrance is on your left.



## TRANSPORTATION:

### Airports

#### **Baltimore Washington International Thurgood Marshall Airport (BWI)– 22 miles from Annapolis**

- Taxi from BWI – approximately \$65/one way
- Super Shuttle 1-800-258-3826 – approximately \$35/one way – email [reservations@supershuttle.net](mailto:reservations@supershuttle.net) or call [\(800\) BLUE-VAN \(800-258-3826\)](tel:800-258-3826)
- Limos various – range \$85/one way including tip – go to [www.rmalimo.com](http://www.rmalimo.com) or call **410-519-0000**

**Airlines:** Air Canada, Southwest/AirTran, British Airways, United, American, Continental, Delta, JetBlue, US Airways

#### **Ronald Reagan Washington National Airport (DCA)– 35 miles from Annapolis**

- Super Shuttle – approximately \$44/one way – email [reservations@supershuttle.net](mailto:reservations@supershuttle.net) or call [\(800\) BLUE-VAN \(800-258-3826\)](tel:800-258-3826)
- Metro – take the Yellow line at DCA to L'Enfant Plaza change to the Orange line to New Carrollton and take a taxi to Annapolis - \$50-\$60/one way
- Rent a car- 45 minute trip (non rush hour).

**Airlines:** AirTran, Air Canada, American, Alaskan Airlines, Continental, Delta, Frontier, JetBlue, Spirit, SunCountry, United, US Airways

#### **Dulles International Airport – 60 miles from Annapolis**

- Super Shuttle – approximately \$70.00 one way allow 2 hours (traffic) – email [reservations@supershuttle.net](mailto:reservations@supershuttle.net) or call [\(800\) BLUE-VAN \(800-258-3826\)](tel:800-258-3826)
- Limo various - \$150.00/one way

**Airlines:** AerLingus, Aeroflot, AeroSur, Air France, AirTran, ANA, American Airlines, Austrian, Avianca, British Airways, Cayman Air, Continental, Delta, Ethiopian, Icelandair, JetBlue, KLM, Korean Air, Luftansa, Qatar Air, Saudi Arabian Airways, South African Airways, Southwest, SAS, TACA, Turkish, United, US Airways, Virgin American, Virgin Atlantic

### Train travel to Annapolis

Regional and Acela trains travel from various East Coast cities and arrive at either BWI Rail Station (preferred) or New Carrollton train station close to Rt. 50. Another option is Baltimore Penn Station however, it is a bit further.

From Union Station in Washington DC you would take **Metro** to either **New Carrollton or BWI Train Station** then a taxicab to Annapolis, or from Baltimore Penn Station you would need a cab or a Super Shuttle.

## Hotels

<u>Location</u>	<u>Hotel</u>	<u>Negotiated or Special Rate</u>	<u>Address</u>	<u>Phone</u>	<u>Web Address</u>
<b>WALK</b>					
Annapolis Across the street	Westin Hotel	**\$131	100 West Gate Circle Annapolis, MD 21401	(410) 972-4300	<a href="http://www.westinannapolis.com">www.westinannapolis.com</a>
Annapolis About three blocks	Loews Hotel		126 West Street Annapolis, MD 21041	(410) 263-7777	<a href="http://www.loewshotels.com">www.loewshotels.com</a>
Annapolis 1.6 miles	Annapolis Waterfront Hotel (formerly Marriott)		80 Compromise St. Annapolis, MD 21401	(410) 268-7555	<a href="http://www.marriott.com">www.marriott.com</a>
Annapolis 1.3 miles	Historic Inns Group of inns		58 State Circle Annapolis, MD 21401	(410) 263-2641	<a href="http://www.historicinnsfannapolis.com">www.historicinnsfannapolis.com</a>
<b>CAB or DRIVE</b>					
Annapolis 1.9 miles from X9	Doubletree Hotel		210 Holiday Court Annapolis, MD 21401	(410) 224-3150	<a href="http://www.doubletree.com">www.doubletree.com</a>
Annapolis 2 miles from X9	Crown Plaza		173 Jennifer Road Annapolis, MD 21401	(410) 266-3131	<a href="http://www.sheraton.com">www.sheraton.com</a>
Annapolis 2.3 miles from X9	Courtyard Annapolis		255 Riva Road Annapolis, MD 21410	(410) 266-1555	<a href="http://www.marriott.com">www.marriott.com</a>
Annapolis 2.58 miles from X9	Hilton Garden Inn		305 Harry S. Truman Annapolis, MD 21401	(410) 266-9006	<a href="http://www.hiltongardeninn.com">www.hiltongardeninn.com</a>
Annapolis 2.7 Miles from X9	Hampton Inn & Suites		124 Womack Drive Annapolis, MD 21401	(410) 571-0200	<a href="http://www.hamptoninn.com">www.hamptoninn.com</a>
Annapolis 2.6 Miles from X9	Residence Inn		170 Admiral Cochrane Dr. Annapolis, MD 21401	(410) 573-0900	<a href="http://www.residenceinn.com">www.residenceinn.com</a>
Annapolis 2.9 miles from X9	Springhill Suites		189 Admiral Cochrane Dr. Annapolis, MD 21401	(443) 321-2500	<a href="http://www.marriott.com">www.marriott.com</a>

\*\* To make a reservation at the **Westin Hotel** at the special rate please use the SET Corporate Account #: 526459 and Corporate Name: ASC X9. The guest room rate is a special negotiated rate of (\$129, not including taxes). WiFi in guest room is complimentary. If you have any problems getting the ASC X9 rate, please contact Kandi Repass, 410-972-4315 or [krepass@westinannapolis.com](mailto:krepass@westinannapolis.com).